

Priory Class Term 5 & 6 2026.

ENGLISH:

- A howl at dusk – Narrative writing describing character, setting and atmosphere
 - Island of Whispers
 - Boy in the Tower
- Lots of writing opportunities to build up our evidence.

RE: Beginnings and Endings

- What does it mean to belong to a religion?
- Christianity

History & Geography:

- History – Ancient Greece - How did Ancient Greece influence modern day democracy?
- Geography – Renewable and non-renewable
- Where does our energy come from and are we living sustainably?

MATHS:

- Ratio - Algebra
 - Year 6 SATs week
 - Shape
 - Position and direction
 - Statistics
 - Converting units
- AND MUCH MORE!

ART/DT:

- Landscapes
- Moving toys

PSHE:

- Relationships – solving friendship issues – looking after our mental health – love and loss
- Changing me – puberty – SRE

PE:

- Rounders
- Swimming

MUSIC:

- Dancing in the Street
- Reflect, Rewind, Replay

History focus: Ancient Greece



Key vocabulary for terms 5 and 6:

- Democracy - Assembly - Oligarchy - Tyrant – Sparta – citizen – Parthenon - Architecture – Temple – Gods and Goddesses

HOME LEARNING:

- Reading – 5 times a week to an adult
- Maths, reading and SPAG homework linked to learning in class
- TTRS – all children have logins but please let us know if you need the details again.

SCIENCE:

- Living things and habitats
- Classification
- Vertebrates and invertebrates
- Animals, including humans.
- The circulatory system
- The blood
- The digestive system

COMPUTING:

- Programming – Selection in physical computing.

SATs Week: WB 11.05.2026



History Ancient Greece Knowledge Organiser:

Very Important Vocabulary

Democracy: A system of government where people have the power to make decisions about their country or community, usually by voting.

Voting: The process of choosing someone or making a decision by marking a ballot or using another method to express your choice.

Assembly: A meeting where members of a community come together to discuss and make decisions about important issues or laws.

Metics: Foreigners who lived in Ancient Athens but were not considered full citizens and did not have the same rights as Athenian citizens.

Free Citizen: An adult male in Ancient Athens who had full rights to participate in government, including voting and holding public office.

Modern Democracy: A system of government where all adult citizens have the right to vote and participate in government, regardless of gender, race, or background.

Inclusivity: The practice of including everyone and making sure all people have the opportunity to participate and have their voices heard.

Democracy

Democracy describes a form of government. The word comes from two Greek words that mean 'rule by the people'. In a democracy, like the United Kingdom, the people elect the government, and have a say in how it is run. They do this by voting in elections, a process that allows the people to vote for who they want to represent them locally and nationally.

Where did democracy begin?

Democracy began in Ancient Greece. In fact, the Ancient Greek system is very famous and has helped to shape many systems of democracy around the world today.

Key Features of Democracy

- Voting: Citizens participate in decision-making through elections.
- Representation: Elected officials represent the people.
- Rule of Law: Laws apply equally to all citizens.
- Individual Rights: Citizens have rights that are protected by law.

Examples of democratic and non-democratic systems

Democratic: United States, Ancient Greece and Modern Britain

Non-democratic: North Korea (dictatorship), Saudi Arabia (monarchy without parliamentary oversight)

The structure of Athenian democracy

The Assembly (Ekklesia), The Council (Boule), The Dikasteria, The role of magistrates

The Ekklesia

The Ekklesia was the main assembly of citizens who met 40 times a year to make laws and decisions. Any male Athenian citizen could attend. Out of 40,000 men, about 5,000 attended regularly. They made decisions by a simple majority vote.

The Boule

The Boule were a group of 500 men who served for one year. They met daily and made lots of decisions. They decided what issues to take to the Ekklesia. They were chosen at random.

The Dikasteria

The Dikasteria, or popular courts, was a group of 500 jurors who dealt with crimes. There were no rules or police so that the Dikasteria decided what would be tried and what the sentences would be. The jurors were chosen daily at random from a group of male citizens over 30 years old.

Who was part of the democracy? Men, adults, Athenian citizens

Who could not be part of the democracy? All women, Metics, Slaves and Children

Free Citizens

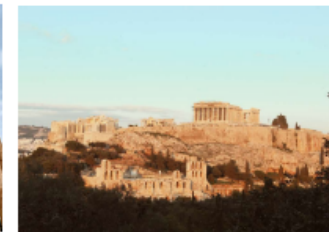
Free citizens were adult men who were born in Athens or had parents who were both Athenian. They had full rights to participate in the city's democracy. This meant they could vote on new laws, speak in the Assembly, and run for government positions. They were important because free citizens were the only people who could take part in making decisions about how Athens was run. They were seen as important because they helped shape the laws and rules of their city.

Structure of Modern British Democracy

Parliament: The supreme legislative body, consisting of the House of Commons and House of Lords. Prime Minister: The head of government, elected by Members of Parliament (MPs). Representation: Citizens elect MPs to represent them in Parliament. Voting Rights: Universal suffrage for adults over 18.

Ancient Greek Philosophers:

Aristotle, Plato, Pericles



Science Knowledge Organiser:

Key Vocabulary

asexual reproduction	Asexual reproduction occurs when only one parent produces offspring that are nearly identical to the parent itself.
fertilisation	Fertilisation is the process of the male and female sex cells joining together.
life cycle	The series of changes a living thing goes through from its beginning to its end is called its life cycle .
living organism	Something that is alive is a living organism . It can move, use energy and reproduce.
marsupial	A marsupial mammal gives birth to partly developed young, which then mature in the mother's pouch.
metamorphosis	Metamorphosis is the process of a living thing completely changing in appearance from one stage of its life to the next.
monotreme	A monotreme is a mammal that lays eggs to reproduce.
naturalist	A naturalist is someone who is interested in and studies nature and natural history.

Key Knowledge

All living things have a **life cycle** – they are born, grow, reproduce and eventually reach the end of their lives. **Reproduction** happens when male and female sex cells join to create **offspring**. The **life cycle** can vary slightly between different **species**.

Mammals

Most mammals (including humans) are **placental**, meaning the foetus develops inside the body until it is ready to be born. However, some mammals are **monotremes**, which lay eggs, and others are **marsupials**, which carry their babies in a pouch after birth.

A leopard is a **placental** mammal.



A platypus is a **monotreme**.



Koalas are **marsupials**.



Birds and Reptiles

Birds and most reptiles hatch from eggs.

A snake is a reptile that usually lays eggs.



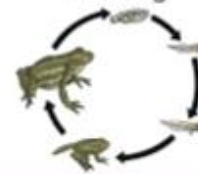
Birds lay eggs in a nest; they hatch when the chick is fully formed.



Amphibians and Insects

Amphibians and insects hatch from eggs and often go through **metamorphosis**, changing in appearance as they grow into adults.

The Life Cycle of a Frog



The Life Cycle of a Ladybird

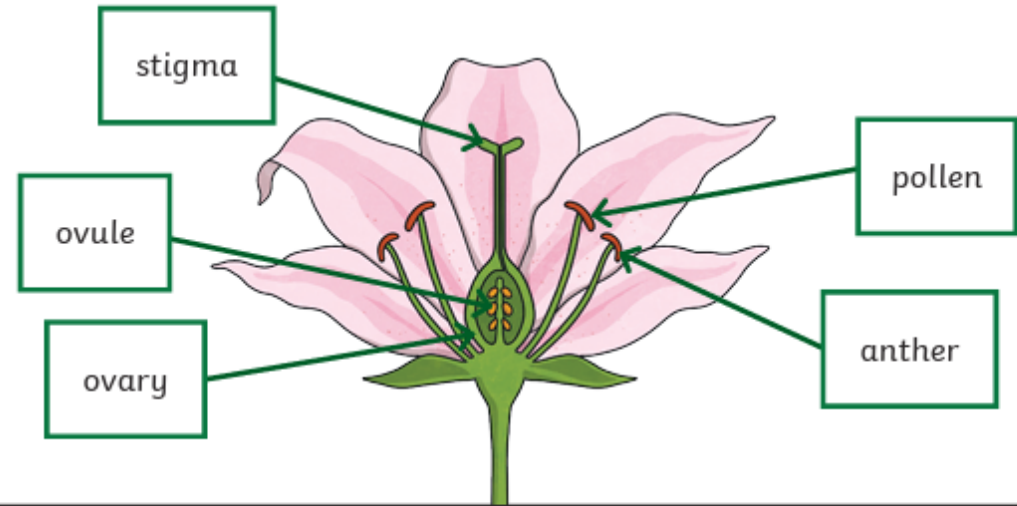


Key Vocabulary

offspring	Offspring are the young of a living organism .
placental	A placental mammal gives birth to live young that have fully developed inside the body.
sexual reproduction	Sexual reproduction occurs when two parents produce offspring that are similar to them but not identical.
species	A species is a group of living things with similar characteristics that can reproduce with other members of the same group to produce fertile offspring .

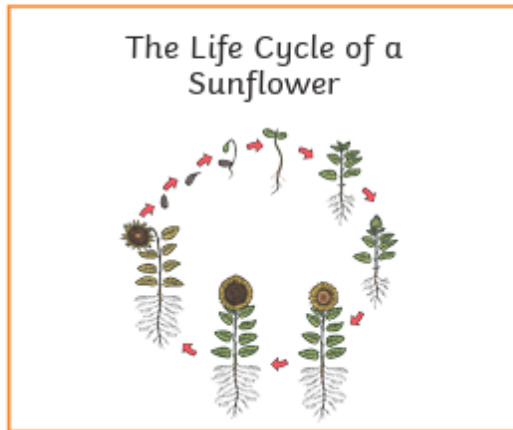
Sexual Reproduction in Plants

Sexual reproduction in plants usually happens when the pollen from the anther of one flower reaches the stigma of another flower. It then travels to the ovary and joins with an ovule, forming a seed that can grow into a new plant.



Plant Life Cycles

Plants also have a **life cycle** but they reproduce differently to animals. Most plants have both male (pollen) and female (ovule) sex cells and reproduce through **sexual reproduction**. Others reproduce **asexually**.



Asexual Reproduction in Plants



Asexual reproduction in plants happens when a parent produces new plants that are almost identical to itself, without the need for **fertilisation**. This can occur through bulbs, tubers or runners.

A potato is a tuber, strawberry plants grow runners and garlic grows from bulbs.

